



Godolphin

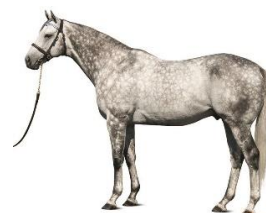


TIME TO PLAY

2015 Bay mare
by **MEDAGLIA D'ORO** out of **GAME FACE**
Height 16hh

Current status

In foal to Frosted (USA)
LSD – 04/22/20



Race record

Summary 10-2-0-2 **Prize money** \$45,659 **Wins** Golden Gate MSW 8f, Presque Isle ALW 6f AW
Beyer 70 **Trainer** Eoin Harty

Disclosures/vices/temperament

REGUMATE

Reproductive history

2020 Bred three times by Frosted (mid-scan negative twice, started Regumate)

2019 Bred three times by Bernardini and twice by Frosted (barren)

Significant veterinary history

No significant issues while with Godolphin

Produce record

Maiden foaling mare

Purchase history

Homebred



Godolphin



DRF.com

Individual Horse Past Performances - Last 12 Starts: Time to Play

Time to Play

Own: Godolphin LLC

B. m. 5 (Feb)
 Sire: Medaglia d'Oro (El Prado) \$200,000
 Dam: Game Face (Menifee)
 Br: Godolphin (Ky)
 Tr: Harty Eoin G

Life	10	2	0	2	\$45,659	70	D.Fst	2	0	0	1	\$7,545	54
2018	5	1	0	1	\$20,549	70	Wet(406)	0	0	0	0	\$0	-
2017	5	1	0	1	\$25,110	60	Synth	5	2	0	1	\$37,224	70
							Turf(297)	3	0	0	0	\$890	64

8Sep18-8WO	fst	1 $\frac{1}{8}$ ◇	244	.493	1:14	1:441	ⓄLaLorgnetL101k	48	3/10	21	42	52 $\frac{1}{2}$	10 $\frac{10}{10}$	10 $\frac{20}{20}$	Moran D	L116	75.05	69-15	ShamrockRose120 $\frac{4}{2}$	MissMoMentum120 $\frac{3}{2}$	CosmicLove117 $\frac{nk}{nk}$	Stalk2w, empty	
28Jun18-7PID	fst	6 $\frac{1}{2}$ f◇	222	.453	1:09 $\frac{4}{1}$	1:16 $\frac{1}{3}$	ⓄOC 40k/n2x-N	70	5/6	4	34	43 $\frac{1}{2}$	55 $\frac{3}{2}$	34 $\frac{1}{2}$	Morales P	L118	2.50	88-14	CrzySweet124 $\frac{2}{2}$	AnswerMyCil124 $\frac{1}{2}$	TimetoPly118 $\frac{3}{2}$	Stalked pace, weakened	
6Jun18-7PID	fst	6f◇	222	.453	:57 $\frac{4}{1}$	1:10 $\frac{2}{3}$	ⓄOC 40k/n2x-N	63	4/7	7	74 $\frac{3}{2}$	72 $\frac{1}{2}$	62 $\frac{3}{2}$	1 $\frac{hd}{hd}$	Morales P	L115	*1.40	88-12	TimetoPly115 $\frac{hd}{hd}$	LittleSilly118 $\frac{3}{2}$	MgicIMystofIs115 $\frac{no}{no}$	Stymied upr, late rush	
28Apr18-3Tam	fm	1	ⓄS	234	.481	1:12	1:36 $\frac{4}{4}$	ⓄOC 75k/n1x-N	64	6/7	43 $\frac{1}{2}$	42	43	43 $\frac{1}{2}$	51 $\frac{1}{2}$	Bracho J A	L118	5.40	84-14	Hera118 $\frac{nk}{nk}$	Humorous Song118 $\frac{1}{2}$	Old Florida118 $\frac{nk}{nk}$	Stalked 2w, no bid
4Feb18-1SA	fm	1	Ⓞ	233	.48	1:11	2:1:34 $\frac{3}{3}$	ⓄOC 75k/n1x-N	54	6/7	42 $\frac{1}{2}$	43	56	58 $\frac{1}{2}$	61 $\frac{0}{3}$	Baze T C	L120	54.90	74-09	Californiagoldrush120 $\frac{3}{2}$	SilkenSpy115 $\frac{2}{2}$	CsinoRed120 $\frac{hd}{hd}$	3wd into str,wkened
10Dec17-4GG	fst	1	Ⓞ	241	.491	1:13	4:1:39	ⓄOC 40k/n1x-N	60	3/6	21 $\frac{1}{2}$	21	3 $\frac{1}{2}$	21	41 $\frac{1}{2}$	Alvarado F T	L120	4.20	84-15	Aniva Bay118 $\frac{3}{2}$	Divine Mercy118 $\frac{hd}{hd}$	Klosters118 $\frac{1}{2}$	Pressed 3w,outfinished
19Nov17-4GG	fst	1	Ⓞ	24	.48	1:13	1:39 $\frac{1}{1}$	ⓄMd Sp Wt 27k	59	2/6	21	1 $\frac{hd}{hd}$	11	14	17 $\frac{1}{2}$	Alvarado F T	L120	*1.50	84-17	TimetoPlay1207 $\frac{1}{2}$	TizAlwaysMusic120 $\frac{nk}{nk}$	CinnmonTwist1207	2w,clear,handily
2Nov17-1Dmr	fm	1	Ⓞ	232	.482	1:13	2:1:37 $\frac{2}{2}$	ⓄMd Sp Wt 53k	54	8/10	98 $\frac{1}{2}$	87 $\frac{1}{2}$	106 $\frac{1}{2}$	96 $\frac{1}{2}$	74 $\frac{3}{2}$	Buick W T	L120	36.30	69-20	Sappho120 $\frac{1}{2}$	Into Glamour120 $\frac{1}{2}$	Luminoso120 $\frac{3}{2}$	Saved ground to lane
2Sep17-2Dmr	fst	1	Ⓞ	222	.464	1:12	2:1:40 $\frac{2}{2}$	ⓄMd Sp Wt 61k	10	2/8	64	61 $\frac{3}{2}$	77	81 $\frac{6}{6}$	82 $\frac{5}{4}$	Garcia M	120	10.30	46-29	YesterdysNews120 $\frac{1}{2}$	Stylitud120 $\frac{2}{2}$	SucOnSid115 $\frac{nk}{nk}$	Saved ground, gave way
6Aug17-3Dmr	fst	6 $\frac{1}{2}$ f	222	.461	1:11	1:17	ⓄMd Sp Wt 61k	54	7/10	2	73 $\frac{1}{2}$	62 $\frac{3}{2}$	49	314 $\frac{3}{2}$	Garcia M	120	14.40	72-17	Gas Station Sushi123 $\frac{3}{2}$	Broome120 $\frac{1}{2}$	Time to Play120 $\frac{14}{14}$	wd turn,3wd into str	